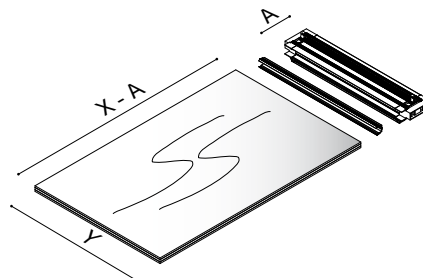
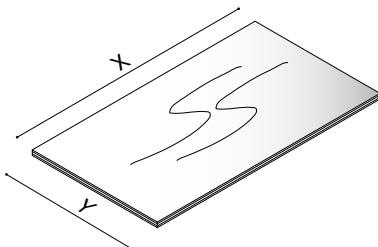
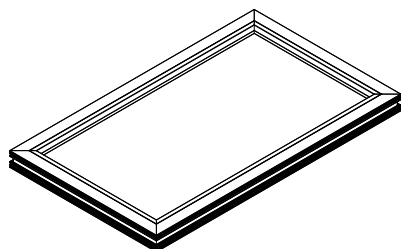
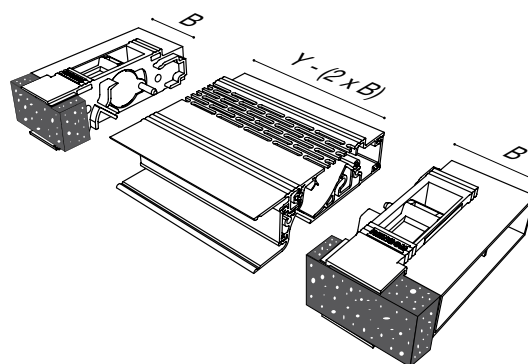
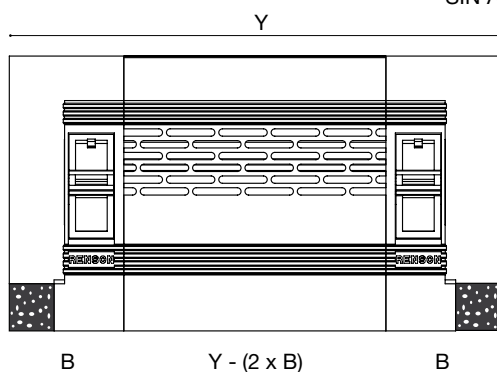


**MONTAGE-INSTRUCTIES • INSTRUCTIONS DE MONTAGE • MONTAGE-RICHTLINIE
 INSTALLATION INSTRUCTIONS • INSTRUCCIONES DE MONTAJE**


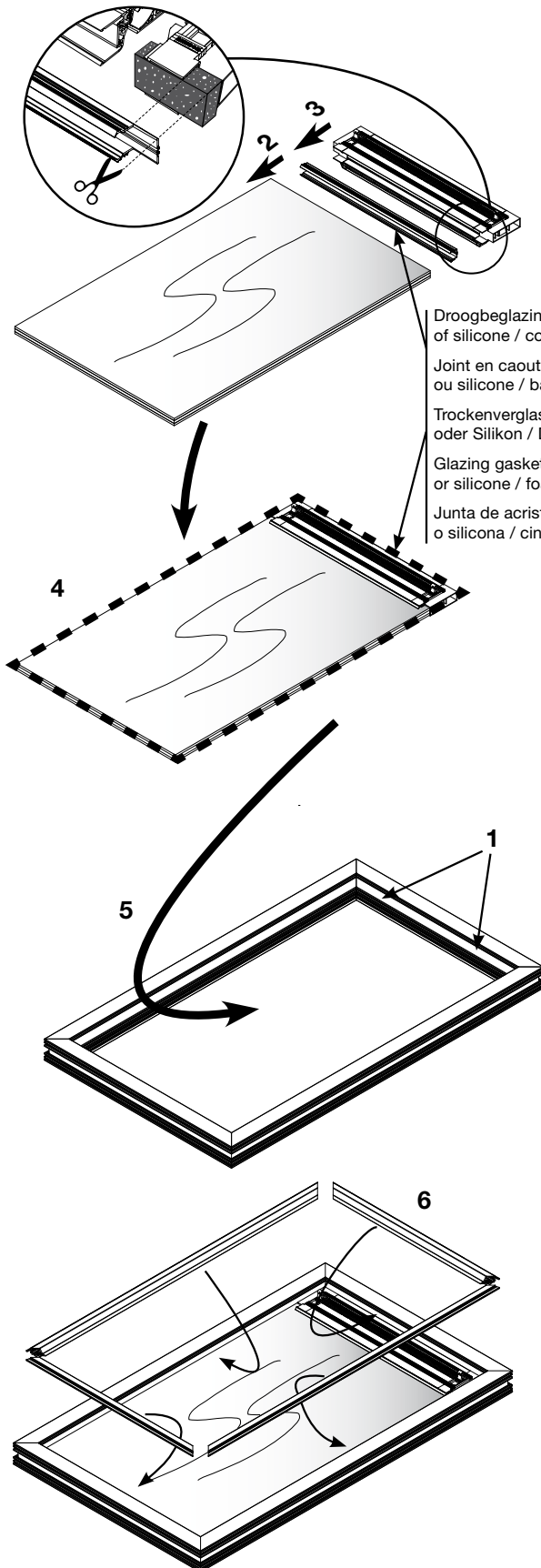
ZONDER RAAMVERLUCHTING
 SANS AERATEUR
 OHNE FENSTERLÜFTUNG
 WITHOUT WINDOW VENT
 SIN AIREADOR

MET RAAMVERLUCHTING
 AVEC AERATEUR
 MIT FENSTERLÜFTUNG
 WITH WINDOW VENT
 CON AIREADOR



| Raamverlichtingen Aerateurs Fensterlüftungen Window Ventilators Aireadores | A = Glasaf trek A = Deduction de vitrage A = Glasabzugmaß A = Glazing deduction A = Reducción vidrio | Droogbeglazingsrubber Joint en caoutchouc Trockenverglasungsdichtung Glazing gaskets Junta de acristalamiento | B = Afmeting kopschot B = Dimension embout B = Abmessung Endkappe B = Dimension endcap B = Dimensión tapa |
|--|--|---|---|
| AK80GL | 108 mm | Nr. 039 - Nr. 034 - Nr. 029 | 2x 32,50 mm |
| AR45 | 45 mm | Nr. 049 - Nr. 104 | 2x 25,50 mm |
| AR60 | 60 mm | Nr. 039 - Nr. 034 | 2x 33,00 mm |
| AR75 | 75 mm | Nr. 039 - Nr. 034 | 2x 42,00 mm |
| AR90 | 90 mm | Nr. 039 - Nr. 034 | 2x 43,50 mm |
| ARH90 | 90 mm | Nr. 039 - Nr. 034 | 2x 43,50 mm |
| T45 | 45 mm | Nr. 049 - Nr. 104 | 2x 25,50 mm |
| TC45 | 50 mm | Nr. 049 | 2x 25,50 mm |
| TCM60 | 60 mm | Nr. 039 - Nr. 034 | 2x 39,00 mm |
| TH45 | 45 mm | Nr. 049 | 2x 25,50 mm |
| THK60 | 60 mm | Nr. 039 - Nr. 034 | 2x 33,00 mm |
| THK90 | 90 mm | Nr. 039 - Nr. 034 | 2x 43,50 mm |
| THL100 | 129 mm | Nr. 039 - Nr. 034 | 2x 22,00 mm |
| THM90 | 90 mm | Nr. 039 - Nr. 034 - Nr. 029 | 2x 43,50 mm |
| THR90 | 90 mm | Nr. 039 - Nr. 034 | 2x 43,50 mm |
| TL100 | 129 mm | Nr. 039 - Nr. 034 - Nr. 104 | 2x 22,00 mm |
| TL67 | 98 mm | Nr. 039 - Nr. 034 - Nr. 104 | 2x 22,00 mm |

MONTAGE-INSTRUCTIES • INSTRUCTIONS DE MONTAGE • MONTAGE-RICHTLIJNIE
INSTALLATION INSTRUCTIONS • INSTRUCCIONES DE MONTAJE



Droogbeglazingsrubber (Alu, PVC)
of silicone / compressieband (hout)
Joint en caoutchouc (Alu, PVC)
ou silicone / bande en mousse(bois)
Trockenverglasungsdichtung (Alu, PVC)
oder Silikon / Dichtungsband (Holz)
Glazing gaskets (Alu, uPVC)
or silicone / foam tape (wood)
Junta de acristalamiento (Alu, PVC)
o silicona / cinta de espuma (Madera)

1 Beglazingsblokkjes:

- A: Afstandsblokje
- B: Steunblokkje

Cales:

- A: Cale de distance
- B: Cale de support

Verglasungsklötze:

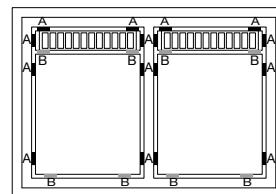
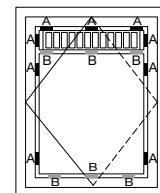
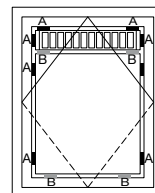
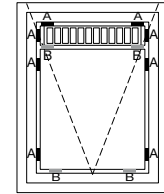
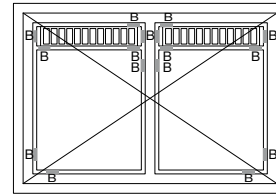
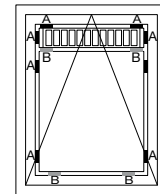
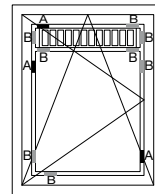
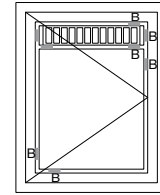
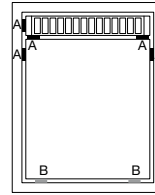
- A: Distanzklötze
- B: Tragklötze

Glazing blocks:

- A: Distance blocks
- B: Setting blocks

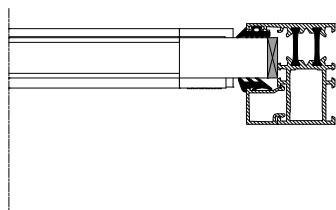
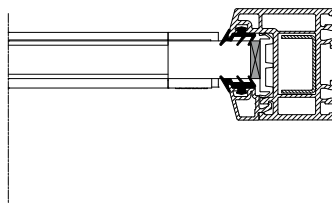
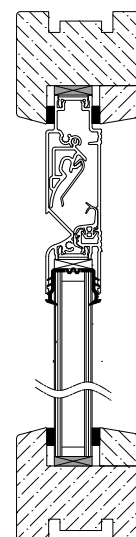
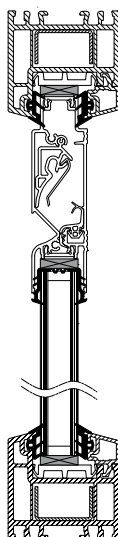
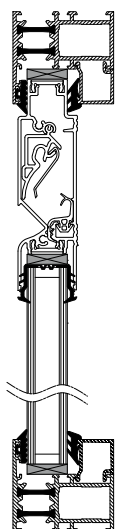
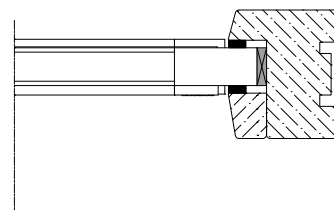
Piezas de acristalamiento:

- A: Pieza de distancia
- B: Pieza de soporte



A / B

- Plaatsing:
Op/onder de kopschotten
- Mise en place:
Sur/sous les embouts
- Montage:
Auf/unter die Endkappe
- Positioning:
On/under the endcaps
- Colocación:
encima o debajo de las
tapas

**MONTAGE-INSTRUCTIES • INSTRUCTIONS DE MONTAGE • MONTAGE-RICHTLINIE
 INSTALLATION INSTRUCTIONS • INSTRUCCIONES DE MONTAJE**
Alu

**PVC
 uPVC**

**Hout
 Bois
 Holz
 Wood
 Madera**


| Droogbeglazingsrubber Joint en caoutchouc Trockenverglasungsdichtung Glazing gaskets Junta de acristalamiento | Kleur Couleur Farbe Colour Color | Voor glasdikte Pour vitrages d'une épaisseur de Für Glasstärken For glass thickness Para anchura de vidrio |
|---|--|--|
| Nr. 029 | Zwart - Noir - Schwarz - Black - Negro | 28-36 mm |
| Nr. 034 | Grijs - Gris - Grau - Grey - Gris | 20-28 mm |
| Nr. 039 | Zwart - Noir - Schwarz - Black - Negro | 20-28 mm |
| Nr. 049 | Zwart - Noir - Schwarz - Black - Negro | 20-28 mm |
| Nr. 104 | Zwart - Noir - Schwarz - Black - Negro | 4 mm |