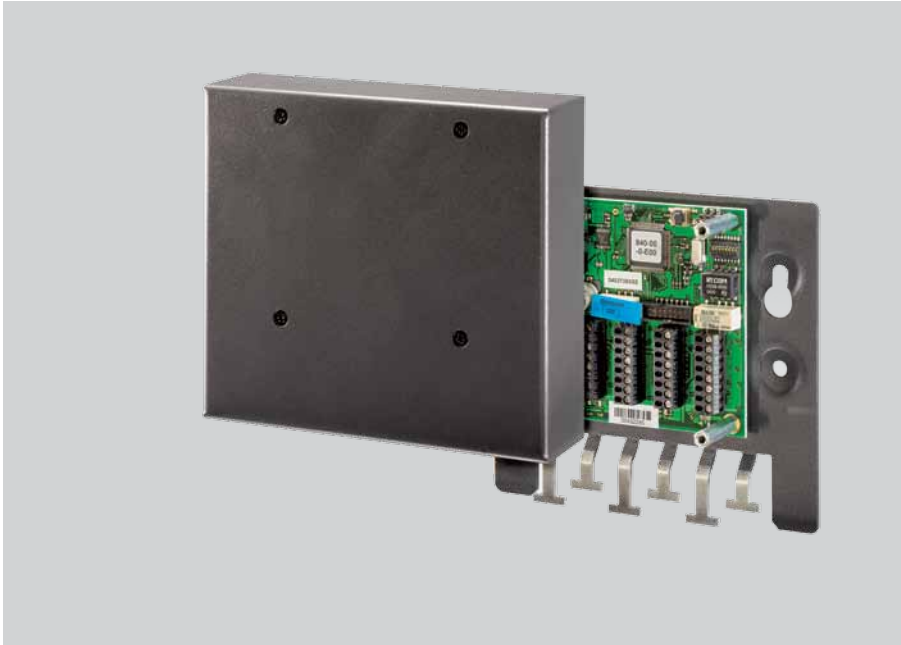


# B-Net<sup>®</sup> 90 10 converter – for the integration of third-party readers



#### Your advantages at a glance

- Facilitates the simple integration of third-party readers into a Kaba access control system
- Connection of up to 2 readers, e.g. Wiegand reader, magnetic stripe reader
- Door monitoring and control as an additional function

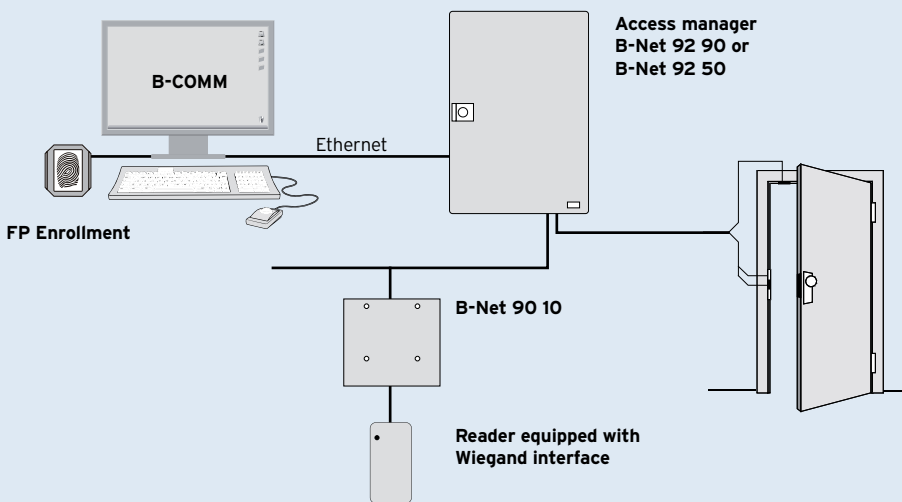
#### **Made in Germany**

developed and produced  
in Germany

The B-Net 90 10 subterminal is designed to integrate existing or third party readers, e.g. readers equipped with a Wiegand or serial interface, into a Kaba access control system. It works as a converter and converts the reader data into the Kaba protocol. Overall, the B-Net 90 10 works like the remaining access control subterminals from Kaba. It is connected either via the access managers B-Net 92 90 and B-Net 92 50 or B-Net 93 xx terminals. Through the door management function it facilitates the opening and monitoring of two doors. For this, it is parameterized in a simple manner.

## Features

- **Investment protection:** Compatibility with the Bedas, Bedanet, B-Net and B-web series makes it possible for you to run mixed operations with Kaba systems already installed and any extensions.
- **Operating modes: Online**  
Online mode when connected to a control unit.
- **Interfaces/Integration:** The subterminal is either connected to an access control unit via an RS-485 interface and thus integrated in an access control system or connected to a time and attendance system for easy door opening.
- **Reading method:** Reads Wiegand data or data from magnetic stripe readers or serial readers and converts them to the Kaba protocol BPA/9.
- **I/Os:** The B-Net 90 10 is equipped with two relays for door opening and four digital inputs (of which two are monitored) that can be used, for example, for monitoring a door (door frame contact / door opener).



## Technical features

### Power supply

- Universal voltage input 12 to 32 V DC

### Environment

- Ambient temperature:  
-25°C up to +55°C
- Relative humidity:  
10 up to 95% non-condensing
- Protection class according to IEC 60529:  
IP20

### Housing

- Metal housing

### Dimensions

- Width 134 mm
- Height 121 mm
- Depth 38 mm

Detailed dimensional drawings are available on our website for downloading.



Certification according to DIN EN ISO 9001



**Kaba GmbH**  
**Workforce Management**  
Albertstraße 3  
78056 Villingen-Schwenningen  
Germany  
Phone +49 7720 603-0  
Fax +49 7720 603-102  
awm.info@kaba.com

[www.kaba.com/workforce-management](http://www.kaba.com/workforce-management)

BEYOND SECURITY

**KABA**®